



NATA LIGHTING CO.,LTD.
www.nata.cn
Email:info@nata.com
Tel:+86-750-3770000 Fax:+86-750-3771111
Address:380JinOu Road,GaoXin Zone,Jiang Men City,Guangdong,China

NT

Client:

LumCAT: 3-2834-L

Luminaire: 92.70.411.00

Report No: 2024401-B021

Ballast type: AC

Test No: 2024401-C021

Voltage(V): 35.160

LampCAT: LUMILEDS LUXEON 1205

Current(A): 0.485

Lamp flux(lm): 2224.0

Power (W): 17.052

Number of Lamps: 1

PF: 0.000

Length(mm): 0

Width(mm): 0

Phm Type: C

Height(mm): 0

Photometric Results

Lumens(lm): 1870.27, Efficiency(%): 84.10% , Luminous Efficacy(lm/W): 109.68

Central intensity(cd): 4352.085, Maximum intensity(cd): 4352.085

Angle of maximum intensity: C=0.0 γ =0.0

Beam Angle(50%Imax): [C0/180]Total=35.2

[C90/270]Total=35.2

Field angle(10%Imax): [C0/180]Total=65.0

[C90/270]Total=65.0

Maximum s/h(1/2): C0_180=0.58 C90_270=0.58

Maximum s/h(1/4): C0_180=0.58 C90_270=0.58

Up flux rate of lamp(%): 0.00%

Down flux rate of lamp(%): 84.10%

Up flux rate of LUM(%): - -

Down flux rate of LUM(%): 100.00%

CIE Type : Direct lighting

Output flux ratio in π solid angle : 97.967%

Equipment: GMS1980
Temperature(°C): 25.0

Date: 2024/4/01
Humidity(%): 60.0%

Operator: NT07
Distance(m): 7.65

$\gamma(^{\circ})$	Average I(cd)	Zonal F(lm)	Sum F(lm)	Eff Flux(%)	Eff Sum(%)
0.0	4352.084	0.000	0	0.00%	0.00%
1.0	4344.549	4.161	4.161	0.19%	0.22%
2.0	4319.092	12.435	16.596	0.56%	0.89%
3.0	4281.930	20.571	37.167	0.92%	1.99%
4.0	4235.478	28.510	65.677	1.28%	3.51%
5.0	4176.883	36.190	101.867	1.63%	5.45%
6.0	4101.242	43.504	145.371	1.96%	7.77%
7.0	4022.895	50.426	195.797	2.27%	10.47%
8.0	3913.165	56.797	252.594	2.55%	13.51%
9.0	3787.049	62.406	315	2.81%	16.84%
10.0	3633.574	67.154	382.154	3.02%	20.43%
11.0	3468.614	70.965	453.119	3.19%	24.23%
12.0	3281.561	73.789	526.908	3.32%	28.17%
13.0	3095.826	75.684	602.592	3.40%	32.22%
14.0	2878.780	76.474	679.066	3.44%	36.31%
15.0	2687.558	76.417	755.484	3.44%	40.39%
16.0	2489.825	75.863	831.347	3.41%	44.45%
17.0	2281.851	74.308	905.655	3.34%	48.42%
18.0	2097.871	72.212	977.867	3.25%	52.28%
19.0	1913.232	69.785	1047.652	3.14%	56.02%
20.0	1740.883	66.880	1114.532	3.01%	59.59%
21.0	1554.833	63.284	1177.817	2.85%	62.98%
22.0	1400.078	59.380	1237.197	2.67%	66.15%
23.0	1245.571	55.513	1292.71	2.50%	69.12%
24.0	1165.732	52.720	1345.429	2.37%	71.94%
25.0	1067.780	50.785	1396.214	2.28%	74.65%
26.0	966.016	48.008	1444.222	2.16%	77.22%
27.0	883.821	45.257	1489.479	2.03%	79.64%
28.0	807.333	42.816	1532.296	1.93%	81.93%
29.0	730.705	40.239	1572.535	1.81%	84.08%
30.0	652.650	37.350	1609.885	1.68%	86.08%
31.0	565.686	33.905	1643.79	1.52%	87.89%
32.0	478.429	29.913	1673.702	1.34%	89.49%
33.0	387.397	25.508	1699.21	1.15%	90.85%
34.0	311.325	21.145	1720.355	0.95%	91.98%
35.0	241.947	17.183	1737.538	0.77%	92.90%
36.0	162.561	12.880	1750.418	0.58%	93.59%
37.0	113.797	9.013	1759.431	0.41%	94.07%

$\gamma(^{\circ})$	Average I(cd)	Zonal F(lm)	Sum F(lm)	Eff Flux(%)	Eff Sum(%)
38.0	78.493	6.418	1765.849	0.29%	94.42%
39.0	66.767	4.958	1770.807	0.22%	94.68%
40.0	61.112	4.460	1775.267	0.20%	94.92%
41.0	56.130	4.175	1779.442	0.19%	95.14%
42.0	51.953	3.927	1783.369	0.18%	95.35%
43.0	48.069	3.705	1787.074	0.17%	95.55%
44.0	45.040	3.514	1790.588	0.16%	95.74%
45.0	42.209	3.353	1793.942	0.15%	95.92%
46.0	39.847	3.209	1797.151	0.14%	96.09%
47.0	37.571	3.079	1800.23	0.14%	96.25%
48.0	35.669	2.961	1803.19	0.13%	96.41%
49.0	33.980	2.860	1806.051	0.13%	96.57%
50.0	32.341	2.765	1808.816	0.12%	96.71%
51.0	30.915	2.676	1811.492	0.12%	96.86%
52.0	29.656	2.599	1814.091	0.12%	97.00%
53.0	28.442	2.527	1816.618	0.11%	97.13%
54.0	27.235	2.454	1819.072	0.11%	97.26%
55.0	26.116	2.381	1821.454	0.11%	97.39%
56.0	25.004	2.310	1823.764	0.10%	97.51%
57.0	23.928	2.237	1826.001	0.10%	97.63%
58.0	22.787	2.160	1828.161	0.10%	97.75%
59.0	21.726	2.081	1830.242	0.09%	97.86%
60.0	20.739	2.006	1832.249	0.09%	97.97%
61.0	19.773	1.933	1834.182	0.09%	98.07%
62.0	18.844	1.861	1836.043	0.08%	98.17%
63.0	17.966	1.790	1837.833	0.08%	98.27%
64.0	17.154	1.723	1839.556	0.08%	98.36%
65.0	16.438	1.662	1841.219	0.07%	98.45%
66.0	15.757	1.606	1842.825	0.07%	98.53%
67.0	15.062	1.550	1844.375	0.07%	98.62%
68.0	14.499	1.497	1845.872	0.07%	98.70%
69.0	13.914	1.449	1847.322	0.07%	98.77%
70.0	13.431	1.404	1848.726	0.06%	98.85%
71.0	12.904	1.361	1850.087	0.06%	98.92%
72.0	12.436	1.318	1851.405	0.06%	98.99%
73.0	11.997	1.278	1852.683	0.06%	99.06%
74.0	11.580	1.240	1853.922	0.06%	99.13%
75.0	11.200	1.204	1855.126	0.05%	99.19%

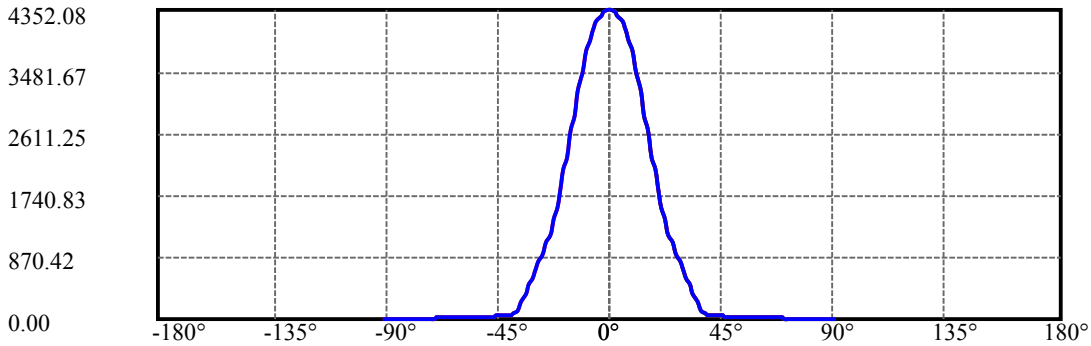
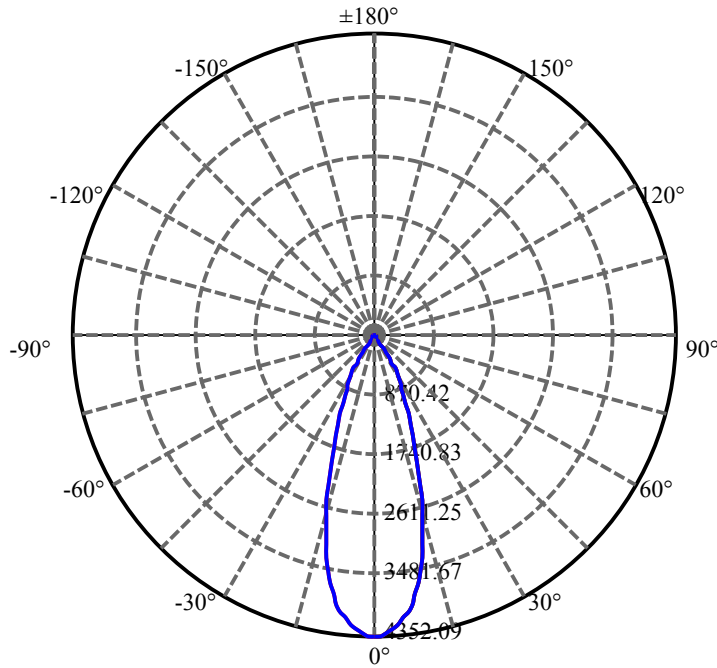
$\gamma(^{\circ})$	Average I(cd)	Zonal F(lm)	Sum F(lm)	Eff Flux(%)	Eff Sum(%)
76.0	10.885	1.172	1856.298	0.05%	99.25%
77.0	10.615	1.146	1857.444	0.05%	99.31%
78.0	10.322	1.121	1858.565	0.05%	99.37%
79.0	10.059	1.095	1859.66	0.05%	99.43%
80.0	9.795	1.070	1860.731	0.05%	99.49%
81.0	9.517	1.044	1861.775	0.05%	99.55%
82.0	9.283	1.020	1862.794	0.05%	99.60%
83.0	9.078	0.998	1863.793	0.04%	99.65%
84.0	8.888	0.979	1864.771	0.04%	99.71%
85.0	8.705	0.960	1865.732	0.04%	99.76%
86.0	8.493	0.940	1866.672	0.04%	99.81%
87.0	8.332	0.921	1867.592	0.04%	99.86%
88.0	8.200	0.906	1868.498	0.04%	99.91%
89.0	8.083	0.893	1869.391	0.04%	99.95%
90.0	8.032	0.884	1870.274	0.04%	100.00%

ZONAL LUMEN SUMMARY

Zone	Lumens	%Lamp	%Fixt
0-30	1609.89	72.39%	86.08%
0-40	1775.27	79.82%	94.92%
0-60	1832.25	82.39%	97.97%
0-90	1869.39	84.06%	99.95%
0-120	1869.39	84.06%	99.95%
0-180	1870.27	84.10%	100.00%
60-90	37.14	1.67%	1.99%
90-120	0.00	0.00%	0.00%
90-130	0.00	0.00%	0.00%
90-150	0.00	0.00%	0.00%
90-180	0.00	0.00%	0.00%
0-27.16	1496.22	67.28%	80.00%

ZONAL LUMEN SUMMARY

0-10	382.15
10-20	732.38
20-30	495.35
30-40	165.38
40-50	33.55
50-60	23.43
60-70	16.48
70-80	12.00
80-90	8.66
90-100	0.00
100-110	0.00
110-120	0.00
120-130	0.00
130-140	0.00
140-150	0.00
150-160	0.00
160-170	0.00
170-180	0.00



C0(Max): —————

C0/C180: —————

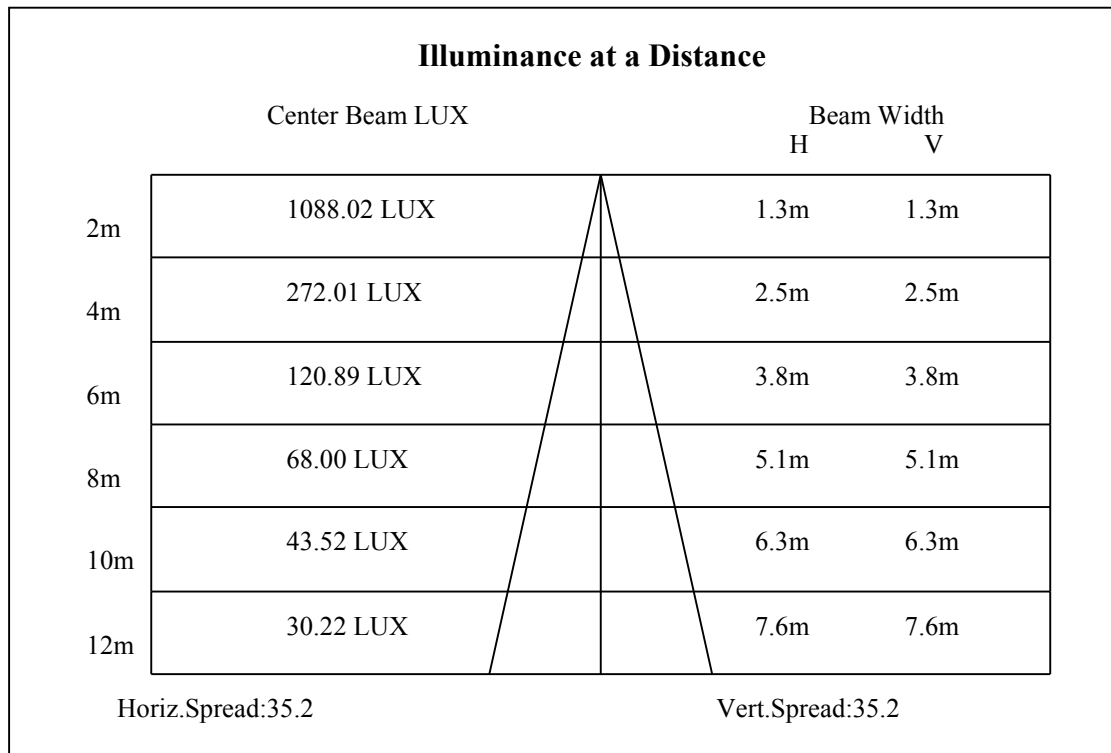
C90/C270: —————

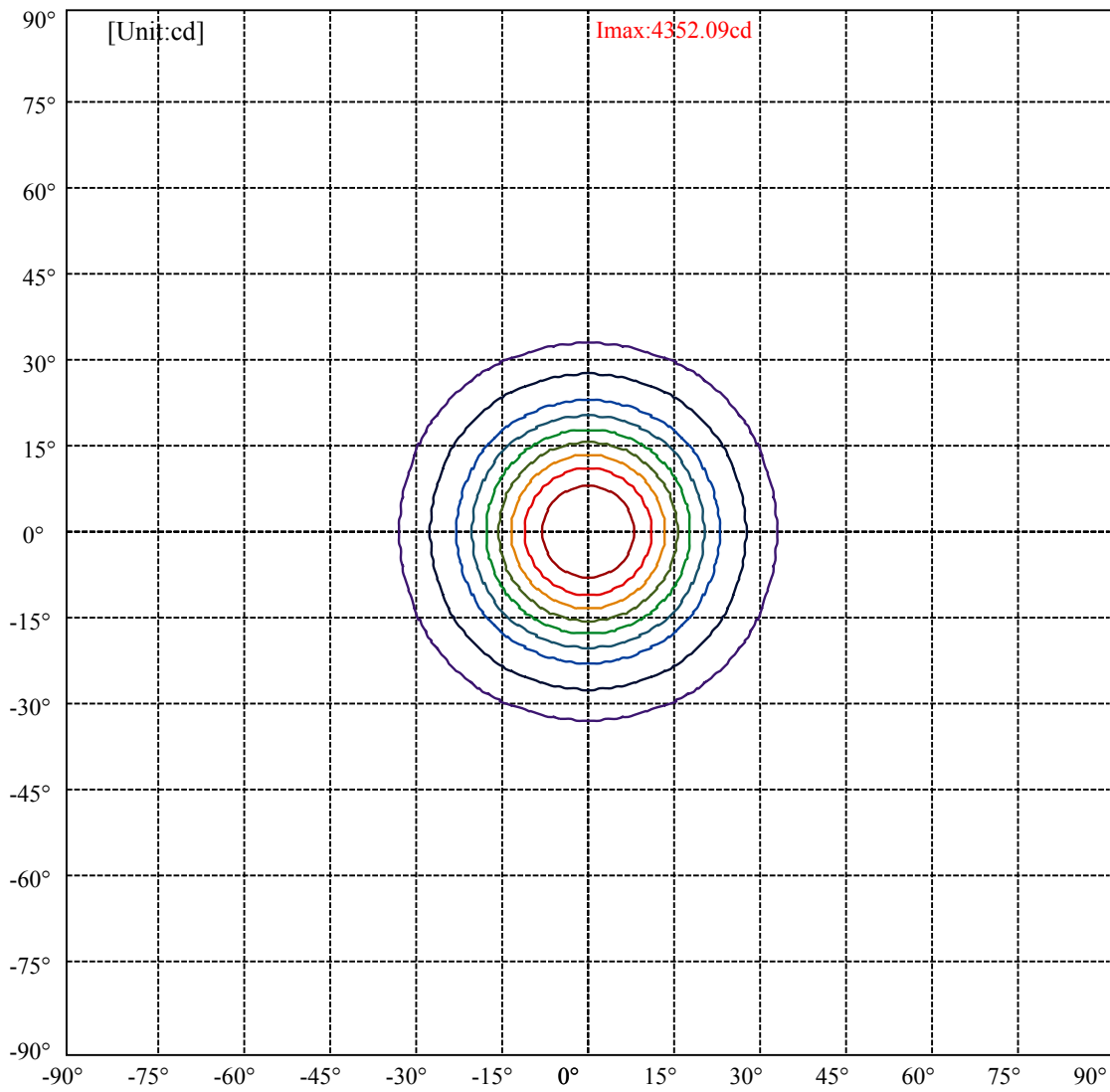
Field angle(10%Imax):C0/180Left:32.5 Right:32.5

:C90/270Left:32.5 Right:32.5

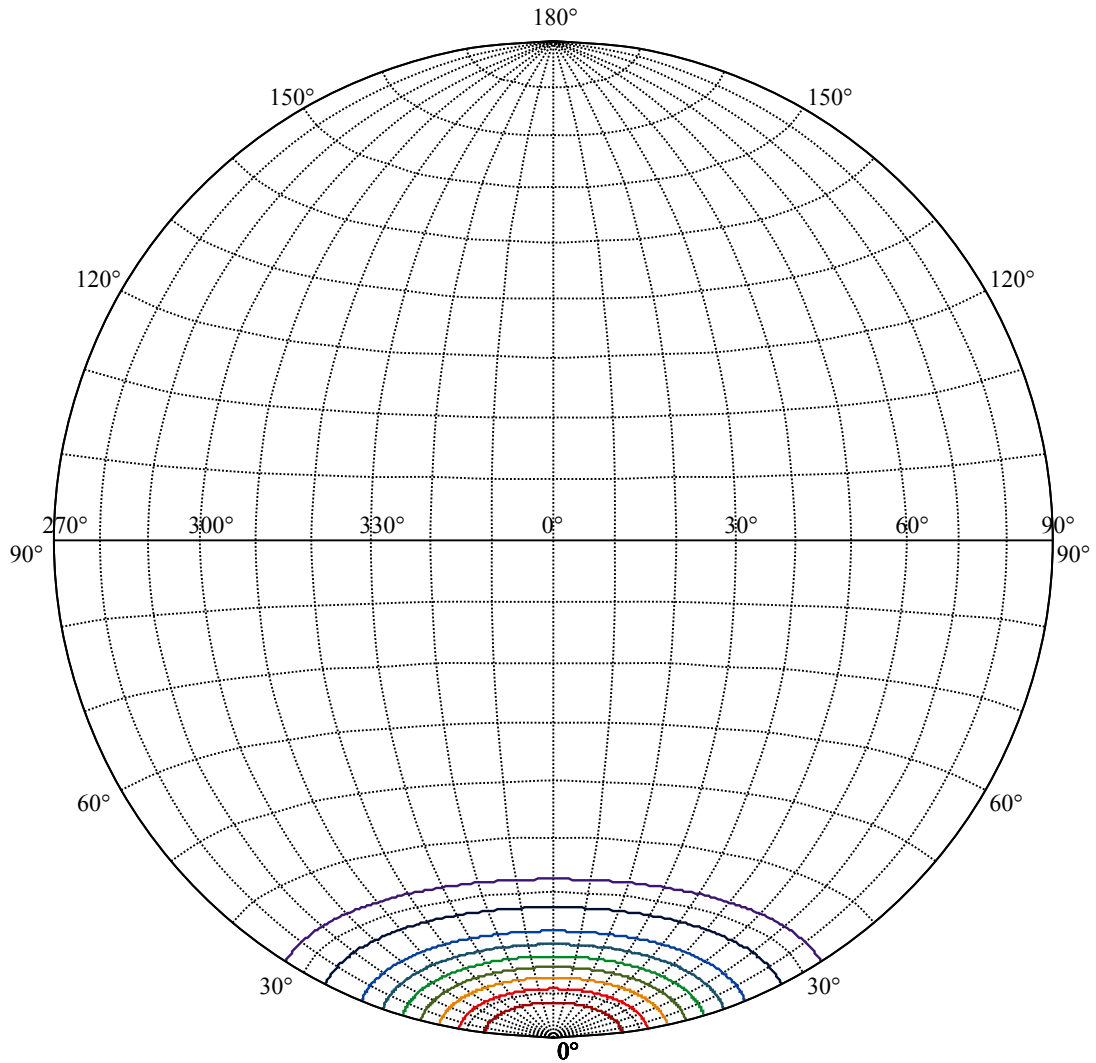
Beam Angle(50%Imax):C0/180Left:17.6 Right:17.6

:C90/270Left:17.6 Right:17.6





(10%Imax) 435.208	—
(20%Imax) 870.417	—
(30%Imax) 1305.63	—
(40%Imax) 1740.83	—
(50%Imax) 2176.04	—
(60%Imax) 2611.25	—
(70%Imax) 3046.46	—
(80%Imax) 3481.67	—
(90%Imax) 3916.88	—



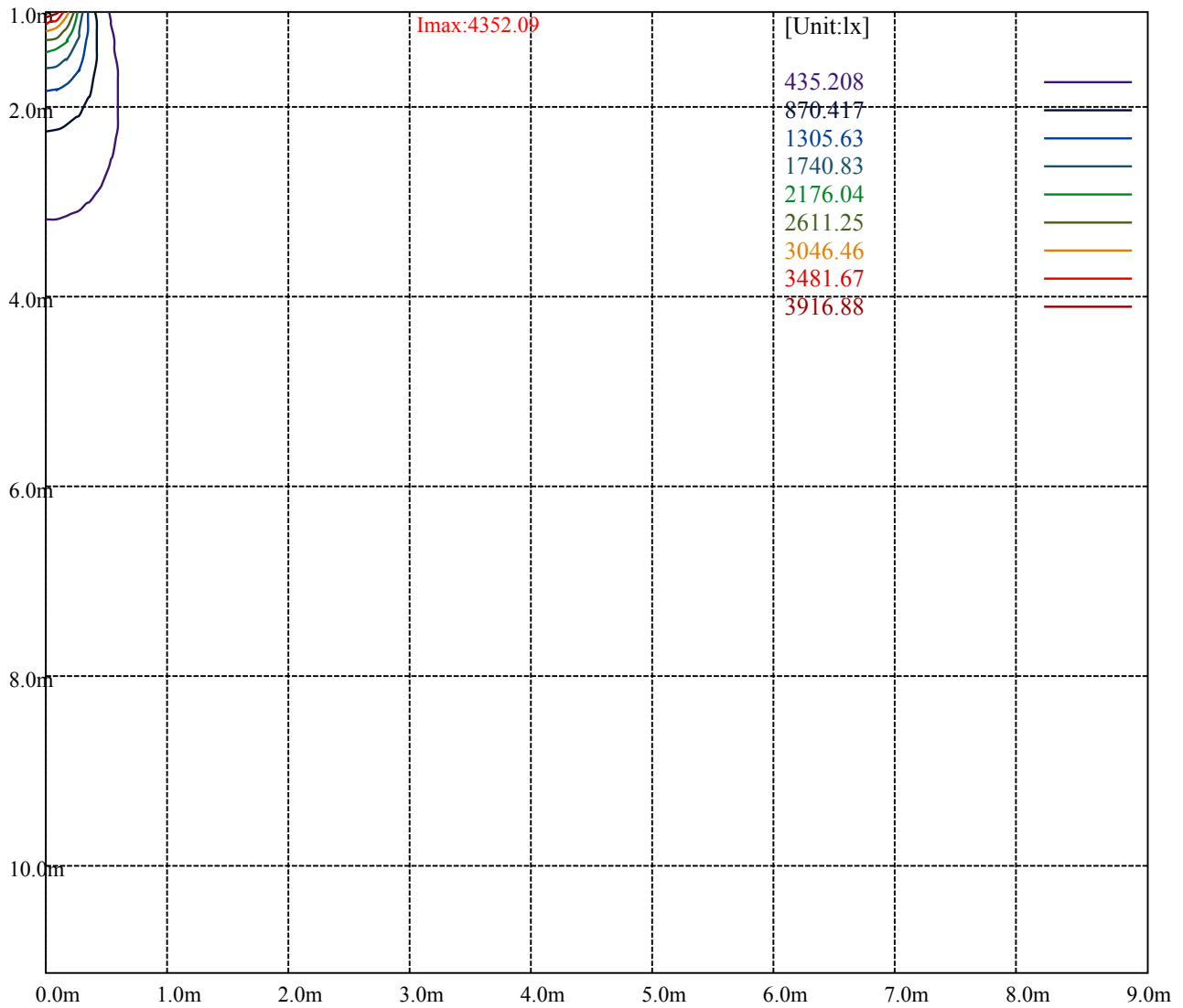
House

[Unit:cd]

Road

Imax:4352.09

(10%Imax) 435.208	—
(20%Imax) 870.417	—
(30%Imax) 1305.63	—
(40%Imax) 1740.83	—
(50%Imax) 2176.04	—
(60%Imax) 2611.25	—
(70%Imax) 3046.46	—
(80%Imax) 3481.67	—
(90%Imax) 3916.88	—



Luminance Table

γ	45	50	55	60	65	70	75	80	85
C0	0	0	0	0	0	0	0	0	0
C45	0	0	0	0	0	0	0	0	0
C90	0	0	0	0	0	0	0	0	0

L(Hor)(65)	L(Ver)(65)	L45(65)	L(Hor)(75)	L(Ver)(75)	L45(75)	L(Hor)(85)	L(Ver)(85)	L45(85)
0	0	0	0	0	0	0	0	0

Glare Table

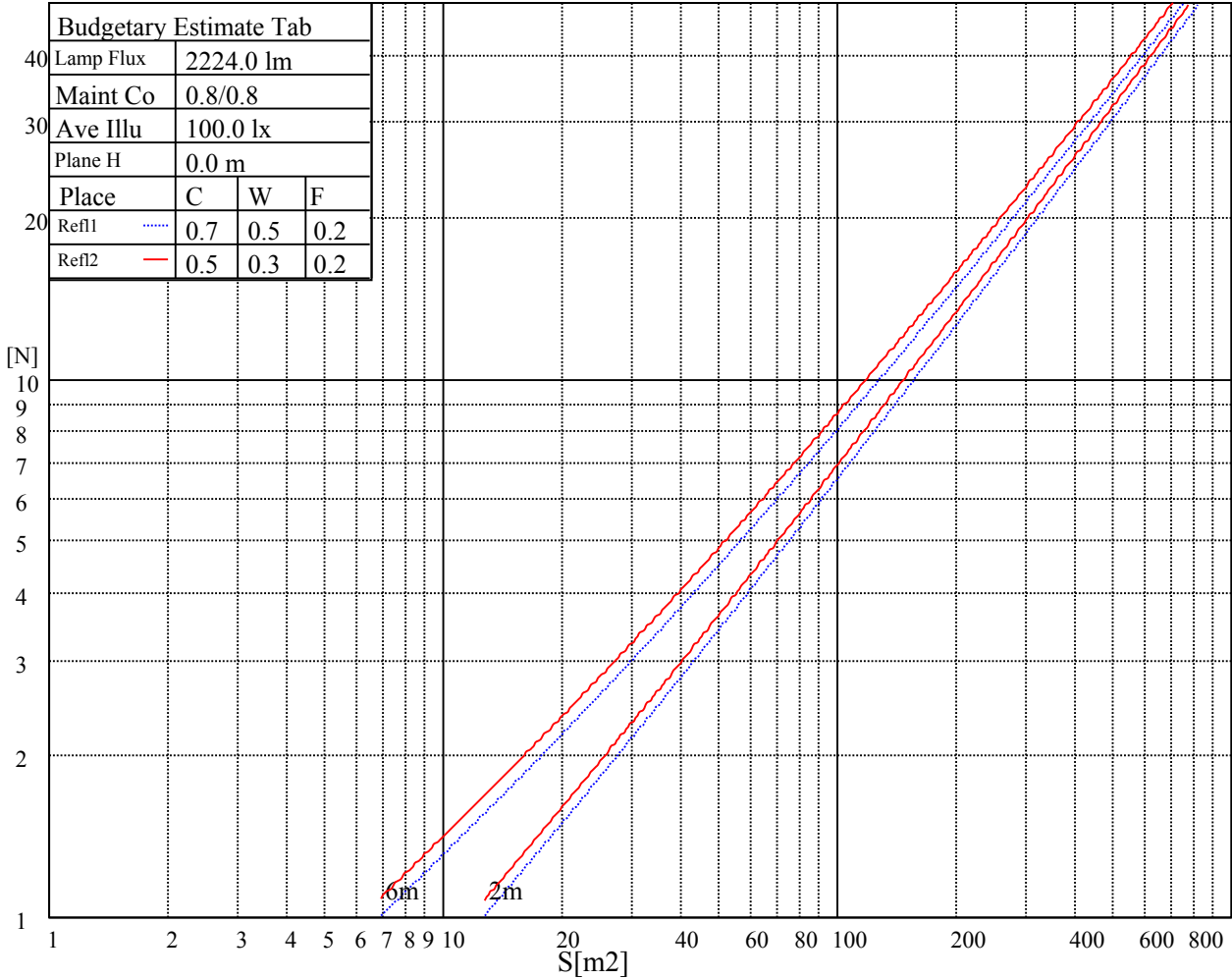
Glare	Quality	Service Values Illuminance(lx)							
1.15	A	2000	1000	500	<=300				
1.5	B		2000	1000	500	<=300			
1.85	C			2000	1000	500	<=300		
2.2	D				2000	1000	500	<=300	
2.55	E					2000	1000	500	<=300
		a	b	c	d	e	f	g	h

Luminance Limiting Curve

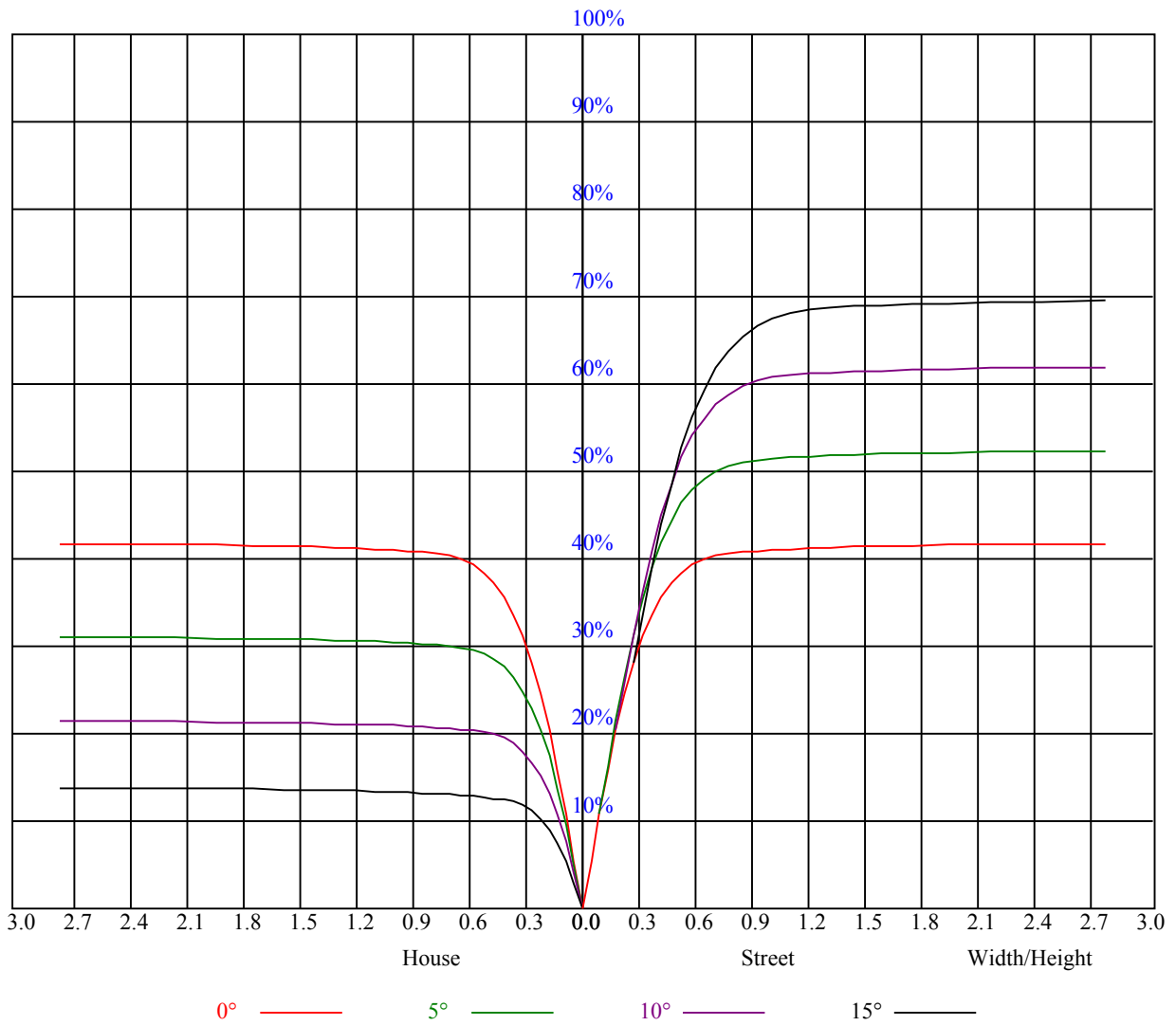


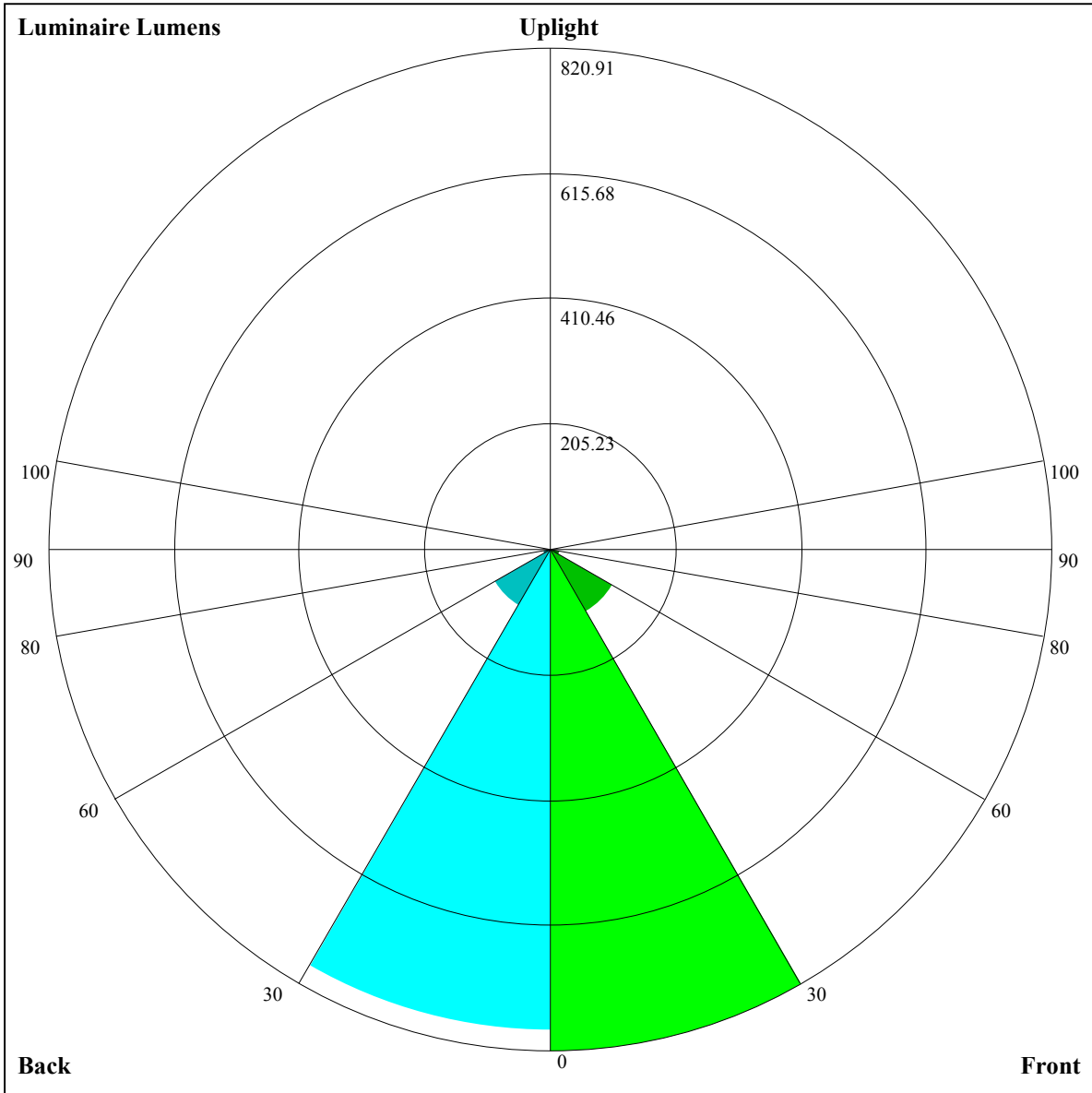
Illumination assessment according UGR											
Rf of Ceiling	70	70	50	50	30	70	70	50	50	30	
Rf of Wall	50	30	50	30	30	50	30	50	30	30	
Rf of Floor	20	20	20	20	20	20	20	20	20	20	
Room dimensions		Viewed crosswise					Viewed endwise				
X	Y										
2H	2H	非数字	非数字	非数字	非数字	非数字	非数字	非数字	非数字	非数字	非数字
	3H	非数字	非数字	非数字	非数字	非数字	非数字	非数字	非数字	非数字	非数字
	4H	非数字	非数字	非数字	非数字	非数字	非数字	非数字	非数字	非数字	非数字
	6H	非数字	非数字	非数字	非数字	非数字	非数字	非数字	非数字	非数字	非数字
	8H	非数字	非数字	非数字	非数字	非数字	非数字	非数字	非数字	非数字	非数字
4H	12H	非数字	非数字	非数字	非数字	非数字	非数字	非数字	非数字	非数字	非数字
	2H	非数字	非数字	非数字	非数字	非数字	非数字	非数字	非数字	非数字	非数字
	3H	非数字	非数字	非数字	非数字	非数字	非数字	非数字	非数字	非数字	非数字
	4H	非数字	非数字	非数字	非数字	非数字	非数字	非数字	非数字	非数字	非数字
	6H	非数字	非数字	非数字	非数字	非数字	非数字	非数字	非数字	非数字	非数字
8H	8H	非数字	非数字	非数字	非数字	非数字	非数字	非数字	非数字	非数字	非数字
	12H	非数字	非数字	非数字	非数字	非数字	非数字	非数字	非数字	非数字	非数字
	4H	非数字	非数字	非数字	非数字	非数字	非数字	非数字	非数字	非数字	非数字
	6H	非数字	非数字	非数字	非数字	非数字	非数字	非数字	非数字	非数字	非数字
	8H	非数字	非数字	非数字	非数字	非数字	非数字	非数字	非数字	非数字	非数字
12H	12H	非数字	非数字	非数字	非数字	非数字	非数字	非数字	非数字	非数字	非数字
	4H	非数字	非数字	非数字	非数字	非数字	非数字	非数字	非数字	非数字	非数字
	6H	非数字	非数字	非数字	非数字	非数字	非数字	非数字	非数字	非数字	非数字
8H	非数字	非数字	非数字	非数字	非数字	非数字	非数字	非数字	非数字	非数字	
Variation with the observer position at spacings:											
S = 1.0H		非数字/非数字					非数字/非数字				
S = 1.5H		非数字/非数字					非数字/非数字				
S = 2.0H		非数字/非数字					非数字/非数字				
Standard tables:		BK0					BK0				
Uncorrected UGR		负无穷大					负无穷大				

UGR calculation is based on CIE Publ. 117 ,S/H = 0.25



RHOCC	80			70			50			30			10			0
RHOW	50	30	10	50	30	10	50	30	10	50	30	10	50	30	10	0
RCR	COEFFICIENTS OF UTILIZATION RHOF=20 CU															
0	1.00	1.00	1.00	0.98	0.98	0.98	0.93	0.93	0.93	0.89	0.89	0.89	0.86	0.86	0.86	0.84
1	0.94	0.92	0.90	0.92	0.90	0.88	0.88	0.87	0.86	0.85	0.84	0.83	0.82	0.82	0.81	0.79
2	0.88	0.85	0.82	0.87	0.84	0.81	0.84	0.82	0.80	0.81	0.80	0.78	0.79	0.78	0.76	0.75
3	0.83	0.79	0.76	0.82	0.79	0.76	0.80	0.77	0.75	0.78	0.76	0.74	0.76	0.74	0.72	0.71
4	0.79	0.75	0.72	0.78	0.74	0.71	0.76	0.73	0.70	0.75	0.72	0.70	0.73	0.71	0.69	0.68
5	0.75	0.71	0.68	0.74	0.70	0.67	0.73	0.69	0.67	0.71	0.68	0.66	0.70	0.68	0.66	0.64
6	0.71	0.67	0.64	0.71	0.67	0.64	0.70	0.66	0.63	0.68	0.65	0.63	0.67	0.65	0.63	0.61
7	0.68	0.64	0.61	0.68	0.64	0.61	0.67	0.63	0.60	0.66	0.63	0.60	0.65	0.62	0.60	0.59
8	0.65	0.61	0.58	0.65	0.61	0.58	0.64	0.60	0.58	0.63	0.60	0.57	0.62	0.59	0.57	0.56
9	0.63	0.58	0.56	0.62	0.58	0.55	0.62	0.58	0.55	0.61	0.57	0.55	0.60	0.57	0.55	0.54
10	0.60	0.56	0.53	0.60	0.56	0.53	0.59	0.56	0.53	0.59	0.55	0.53	0.58	0.55	0.53	0.52





Luminaire Lumens:
FL=820.91,FM=118.26,FH=14.52,FVH=4.82
BL=788,BM=106.92,BH=13.99,BVH=4.74
UL=0,UH=0

BUG Rating:B2-U0-G0

Intensity data(cd)

C/γ(°)	0.0	1.0	2.0	3.0	4.0	5.0	6.0	7.0	8.0
0.0	4361.74	4366.42	4347.11	4306.73	4267.52	4207.24	4131.75	4056.25	3964.96
45.0	4338.92	4359.98	4363.50	4348.28	4316.68	4277.47	4218.95	4151.64	4060.35
90.0	4355.89	4350.62	4330.14	4271.62	4227.14	4170.37	4084.93	4016.46	3919.31
135.0	4351.79	4351.79	4332.48	4301.46	4245.87	4194.37	4118.87	4049.23	3966.13
180.0	4361.74	4343.60	4309.66	4266.93	4227.14	4156.33	4087.27	4007.09	3874.25
225.0	4338.92	4306.73	4253.47	4207.83	4153.99	4083.76	3980.76	3874.83	3740.23
270.0	4355.89	4344.77	4320.77	4286.25	4231.24	4179.15	4118.87	4041.62	3927.50
315.0	4351.79	4332.48	4295.61	4266.35	4214.26	4146.38	4068.54	3986.03	3852.59
360.0	4361.74	4366.42	4347.11	4306.73	4267.52	4207.24	4131.75	4056.25	3964.96
C/γ(°)	9.0	10.0	11.0	12.0	13.0	14.0	15.0	16.0	17.0
0.0	3857.28	3699.85	3548.28	3382.66	3158.52	2972.42	2789.83	2596.12	2368.46
45.0	3971.40	3860.20	3733.79	3555.30	3396.12	3218.21	3035.62	2800.95	2613.67
90.0	3805.78	3636.06	3475.12	3304.82	3125.75	2898.09	2722.53	2487.26	2305.26
135.0	3837.38	3706.29	3554.13	3393.19	3219.97	2997.00	2813.82	2627.72	2394.21
180.0	3751.94	3566.42	3387.93	3207.09	3023.33	2778.12	2587.92	2406.50	2223.91
225.0	3544.77	3365.69	3187.19	2945.50	2757.64	2566.86	2332.77	2149.59	1969.34
270.0	3805.19	3658.89	3492.10	3270.88	3081.85	2833.72	2641.76	2458.59	2217.48
315.0	3722.67	3575.20	3370.37	3193.05	3003.43	2765.83	2576.22	2391.87	2162.46
360.0	3857.28	3699.85	3548.28	3382.66	3158.52	2972.42	2789.83	2596.12	2368.46
C/γ(°)	18.0	19.0	20.0	21.0	22.0	23.0	24.0	25.0	26.0
0.0	2189.97	2010.89	1838.84	1641.03	1494.14	1165.48	1165.48	1115.44	999.45
45.0	2429.91	2208.70	2033.72	1863.41	1671.46	1525.74	1363.05	1250.68	1145.34
90.0	2130.28	1917.84	1759.83	1609.43	1435.62	1150.90	1150.90	1100.81	988.97
135.0	2209.87	2030.79	1828.30	1671.46	1526.91	1366.56	1250.10	1122.52	1029.47
180.0	2005.62	1844.10	1677.31	1494.14	1368.31	1244.25	1115.50	1018.94	905.40
225.0	1796.11	1604.16	1464.88	1163.31	1163.31	1087.23	990.26	902.24	810.07
270.0	2037.81	1873.95	1667.95	1516.96	1384.70	1268.24	1161.14	1028.88	934.66
315.0	1983.39	1815.43	1656.25	1478.92	1156.17	1156.17	1129.43	1002.72	914.77
360.0	2189.97	2010.89	1838.84	1641.03	1494.14	1165.48	1165.48	1115.44	999.45
C/γ(°)	27.0	28.0	29.0	30.0	31.0	32.0	33.0	34.0	35.0
0.0	910.55	833.89	757.52	697.18	619.40	529.39	417.44	326.73	238.71
45.0	1047.61	937.59	857.41	792.45	736.27	647.32	567.73	482.87	393.33
90.0	906.34	830.20	765.12	706.60	618.11	536.71	447.46	337.03	249.95
135.0	941.10	862.68	780.75	726.91	652.00	564.22	453.61	364.65	299.11
180.0	826.40	763.78	708.18	611.03	525.59	438.39	353.53	310.23	310.23
225.0	746.45	685.06	572.70	478.95	367.99	284.65	206.47	142.21	88.72
270.0	855.66	787.19	710.52	623.32	512.13	422.59	336.56	313.15	211.15
315.0	836.46	758.28	693.43	584.76	493.99	404.16	316.37	213.72	144.38
360.0	910.55	833.89	757.52	697.18	619.40	529.39	417.44	326.73	238.71
C/γ(°)	36.0	37.0	38.0	39.0	40.0	41.0	42.0	43.0	44.0
0.0	161.35	95.04	76.55	69.76	63.85	58.17	53.96	49.74	46.82
45.0	304.96	304.96	125.82	79.47	71.75	65.19	59.11	54.60	50.80
90.0	153.91	98.38	75.08	66.48	60.69	56.24	51.97	47.75	44.77
135.0	299.11	112.77	78.77	69.58	61.98	57.29	52.96	48.46	45.35
180.0	107.10	76.31	68.00	62.15	57.59	52.20	48.75	44.89	42.25
225.0	75.38	69.17	63.32	57.64	53.26	49.69	46.58	43.13	40.79
270.0	103.47	76.66	70.75	64.78	59.99	54.66	51.15	47.99	45.06
315.0	95.22	77.07	69.64	64.26	59.81	55.60	51.15	47.99	44.48
360.0	161.35	95.04	76.55	69.76	63.85	58.17	53.96	49.74	46.82

Intensity data(cd)

C/γ(°)	45.0	46.0	47.0	48.0	49.0	50.0	51.0	52.0	53.0
0.0	44.01	41.55	38.86	36.87	35.17	33.18	31.89	30.67	29.50
45.0	46.82	44.01	41.43	39.15	36.52	34.76	33.12	31.60	30.02
90.0	42.08	39.68	37.04	35.23	33.65	31.66	30.43	29.26	27.97
135.0	42.66	39.68	37.51	35.58	33.88	32.01	30.61	29.50	28.38
180.0	39.91	37.81	35.58	34.06	32.60	31.25	29.79	28.68	27.56
225.0	38.16	36.34	34.76	32.89	31.60	30.31	29.09	27.68	26.51
270.0	42.08	39.91	37.98	35.87	34.29	32.89	31.25	30.02	28.91
315.0	41.96	39.80	37.40	35.70	34.12	32.66	31.13	29.85	28.68
360.0	44.01	41.55	38.86	36.87	35.17	33.18	31.89	30.67	29.50
C/γ(°)	54.0	55.0	56.0	57.0	58.0	59.0	60.0	61.0	62.0
0.0	28.21	27.04	26.10	24.70	23.64	22.59	21.36	20.37	19.49
45.0	28.85	27.86	26.45	25.57	24.23	23.29	22.30	21.19	20.07
90.0	26.92	25.75	24.76	23.70	22.77	21.48	20.54	19.66	18.73
135.0	27.21	26.16	24.93	23.82	22.88	21.71	20.83	19.96	19.08
180.0	26.34	25.16	24.17	23.12	21.89	20.95	19.84	18.90	18.14
225.0	25.52	24.40	23.23	22.24	21.19	20.07	19.14	18.38	17.38
270.0	27.33	26.34	25.28	24.17	22.88	21.89	21.01	20.01	18.96
315.0	27.51	26.22	25.11	24.11	22.82	21.83	20.89	19.72	18.90
360.0	28.21	27.04	26.10	24.70	23.64	22.59	21.36	20.37	19.49
C/γ(°)	63.0	64.0	65.0	66.0	67.0	68.0	69.0	70.0	71.0
0.0	18.49	17.67	17.03	16.33	15.51	14.98	14.40	13.87	13.28
45.0	19.14	18.32	17.56	16.62	16.04	15.39	14.63	14.10	13.58
90.0	17.91	17.03	16.33	15.74	14.92	14.40	13.75	13.28	12.87
135.0	18.08	17.32	16.56	15.98	15.22	14.63	14.10	13.46	13.05
180.0	17.38	16.44	15.80	15.16	14.46	13.93	13.46	13.05	12.47
225.0	16.62	15.98	15.16	14.63	14.10	13.46	12.99	12.52	12.11
270.0	18.08	17.32	16.50	15.80	15.10	14.51	13.99	13.52	12.93
315.0	18.02	17.15	16.56	15.80	15.16	14.69	13.99	13.64	12.93
360.0	18.49	17.67	17.03	16.33	15.51	14.98	14.40	13.87	13.28
C/γ(°)	72.0	73.0	74.0	75.0	76.0	77.0	78.0	79.0	80.0
0.0	12.82	12.29	11.88	11.47	11.06	10.77	10.48	10.18	9.89
45.0	13.11	12.58	12.11	11.65	11.29	11.00	10.59	10.36	10.12
90.0	12.29	11.88	11.53	11.18	10.89	10.53	10.30	10.07	9.77
135.0	12.64	12.06	11.65	11.24	10.94	10.65	10.42	10.12	9.89
180.0	12.00	11.65	11.18	10.89	10.59	10.30	10.07	9.77	9.54
225.0	11.65	11.29	10.94	10.65	10.30	10.07	9.83	9.60	9.36
270.0	12.47	12.06	11.70	11.24	10.94	10.65	10.42	10.18	9.89
315.0	12.52	12.17	11.65	11.29	11.06	10.94	10.48	10.18	9.89
360.0	12.82	12.29	11.88	11.47	11.06	10.77	10.48	10.18	9.89
C/γ(°)	81.0	82.0	83.0	84.0	85.0	86.0	87.0	88.0	89.0
0.0	9.71	9.42	9.25	9.01	8.84	8.72	8.43	8.25	8.13
45.0	9.83	9.60	9.36	9.13	8.90	8.72	8.54	8.43	8.25
90.0	9.54	9.31	9.07	8.90	8.66	8.54	8.37	8.25	8.19
135.0	9.66	9.36	9.13	8.90	8.72	8.54	8.43	8.19	8.13
180.0	9.31	9.07	8.90	8.66	8.54	8.37	8.19	8.08	7.96
225.0	9.13	8.95	8.78	8.60	8.37	8.19	8.19	8.02	8.02
270.0	9.48	9.31	9.01	8.84	8.66	8.43	8.25	8.19	7.96
315.0	9.48	9.25	9.13	9.07	8.95	8.43	8.25	8.19	8.02
360.0	9.71	9.42	9.25	9.01	8.84	8.72	8.43	8.25	8.13

Intensity data(cd)

C/γ(°)	90.0
0.0	8.02
45.0	8.08
90.0	7.96
135.0	8.02
180.0	8.02
225.0	8.02
270.0	8.02
315.0	8.13
360.0	8.02